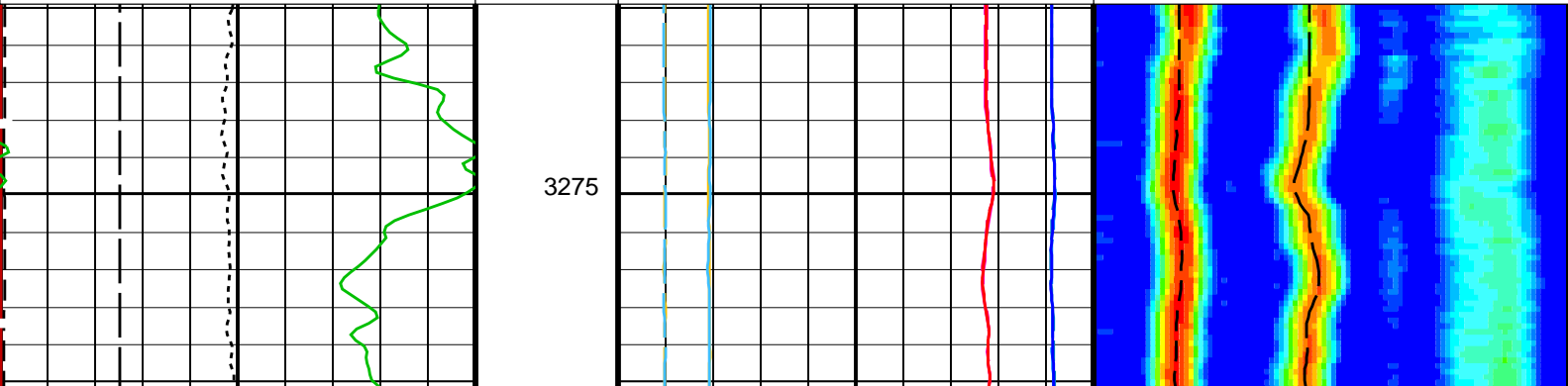


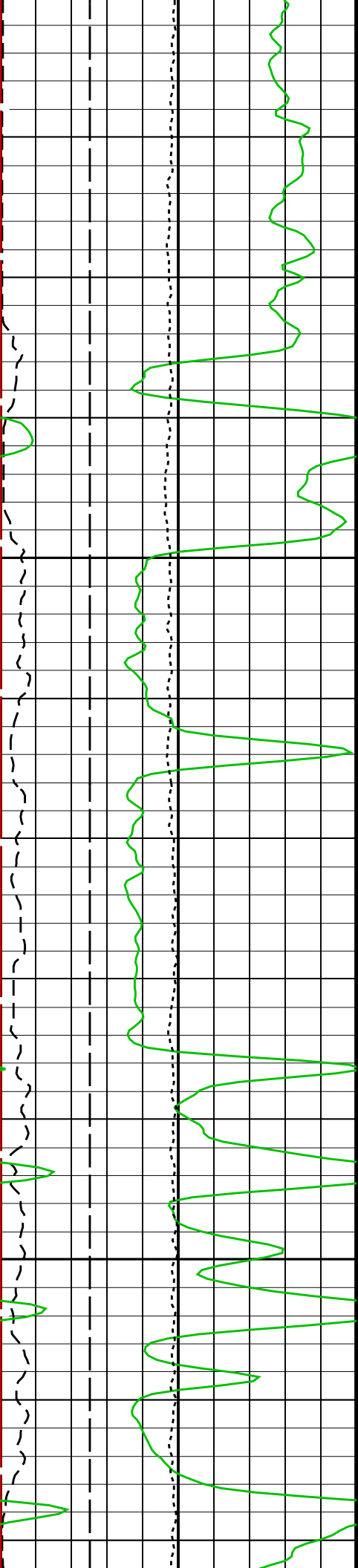
Input DLIS Files						
DEFAULT	FMI_DSI_027PUP	FN:40	PRODUCER	08-Feb-2010 22:35	3374.3 M	3269.9 M
Output DLIS Files						
DEFAULT	FMI_DSI_035PUP	FN:58	PRODUCER	09-Feb-2010 12:40	3374.3 M	3269.9 M

OP System Version: 17C0-154						
FBST-B	17C0-154	DSST-B	17C0-154			
EDTC-B	17C0-154	DTPC-A	17C0-154			

PIP SUMMARY						
Time Mark Every 60 S						

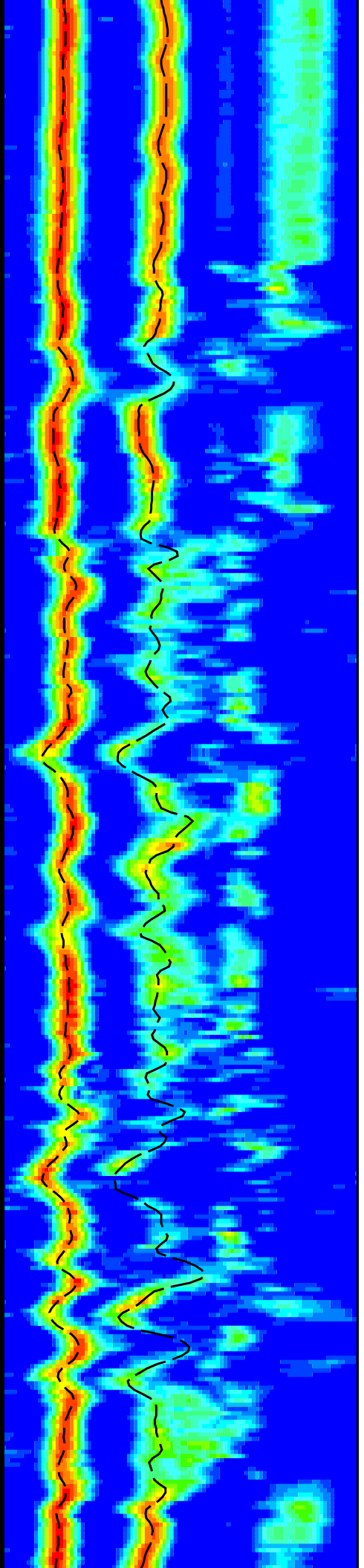
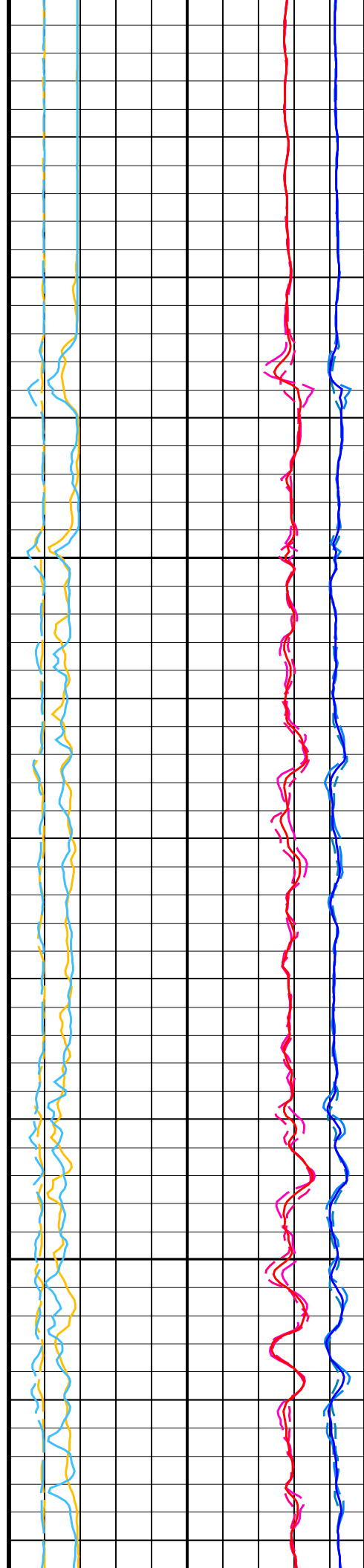
<div>Waveform Data Copy Indicator 4 – Monopole P&S (WCI4)</div> <div>0 (----) 10</div> <div>Tension (TENS)</div> <div>10000 (LBF) 0</div>		<div>Delta-T Shear – P & S (DT4S)</div> <div>440 (US/F) 40</div>	<div>MinAmplitudeMax</div> <div>Rec.Array P&S Slow Proj. CVDL (SPR4)</div> <div>40 (US/F) 240</div>
		<div>Delta-T Shear / TA – P & S (DTTS)</div> <div>440 (US/F) 40</div>	
		<div>Delta-T Shear / RA – P & S (DTRS)</div> <div>440 (US/F) 40</div>	
		<div>Delta-T Comp – P & S (DT4P)</div> <div>440 (US/F) 40</div>	
		<div>Delta-T Comp / TA – P & S (DTPP)</div> <div>440 (US/F) 40</div>	
		<div>Delta-T Comp / RA – P & S (DTRP)</div> <div>440 (US/F) 40</div>	
		<div>Peak Coherence / TA – P & S Shear (CHTS)</div> <div>-1 (----) 9</div>	
<div>Gamma Ray (GR_EDTC)</div> <div>0 (GAPI) 200</div>	<div>Tool/Tot. Drag From D3T to STIA</div>	<div>Peak Coherence / RA – P & S Shear (CHRS)</div> <div>-1 (----) 9</div>	
<div>SAM4 Waveform Gain (WFG4)</div> <div>0 (----) 1000</div>	<div>Cable Drag From STIA to STIT</div>	<div>Peak Coherence / TA – P & S Comp (CHTP)</div> <div>0 (----) 10</div>	
<div>Bit Size (BS)</div> <div>6 (IN) 16</div>	<div>Stuck Stretch (STIT)</div> <div>0 (M) 20</div>	<div>Peak Coherence / RA – P & S Comp (CHRP)</div> <div>0 (----) 10</div>	
		<div>Delta-T Shear / RA – P & S (DTRS)</div> <div>40 (US/F) 240</div>	
		<div>Delta-T Comp / RA – P & S (DTRP)</div> <div>40 (US/F) 240</div>	

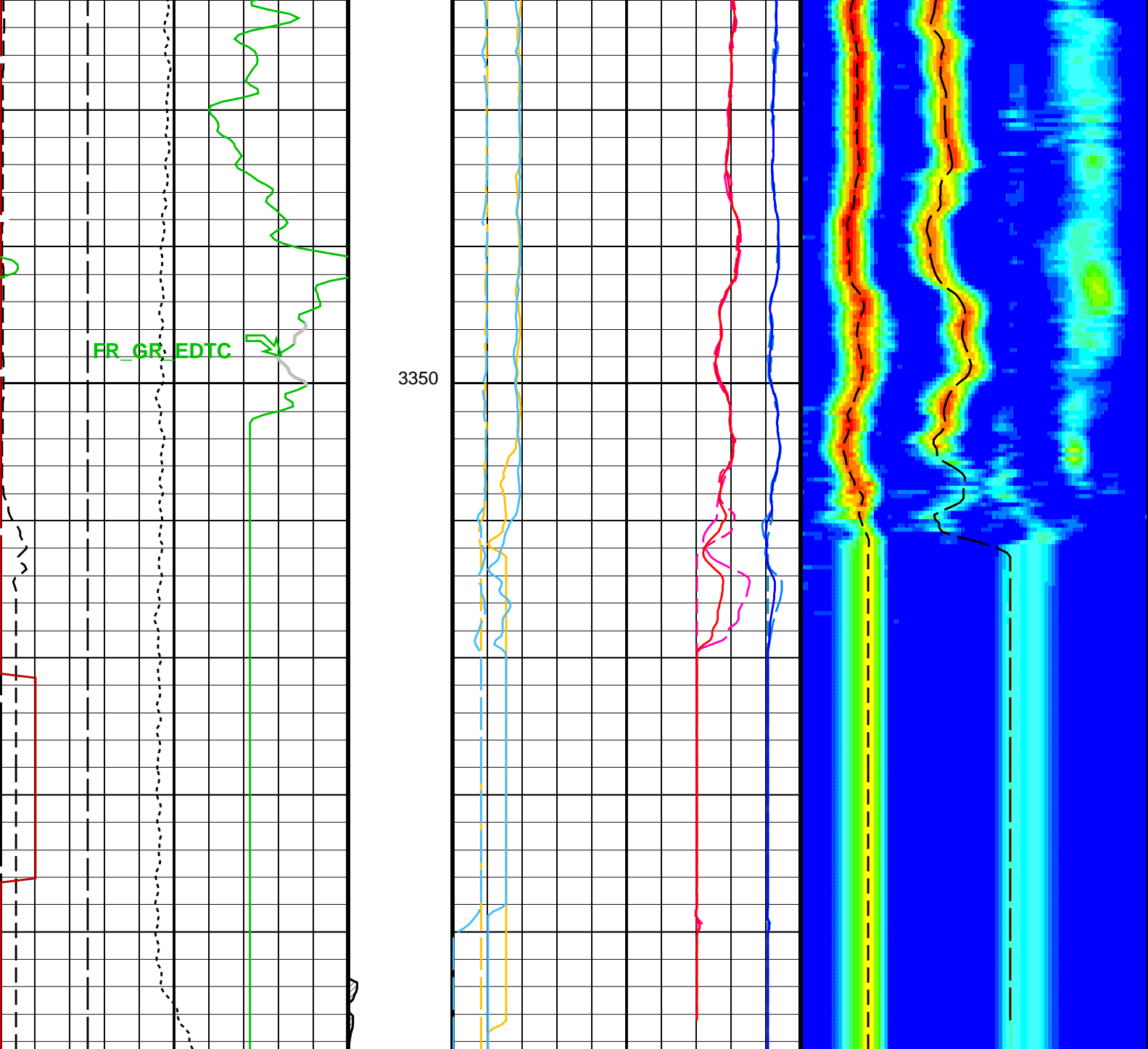




3300

3325





<div>Bit Size (BS) (IN)</div> <div>616</div>	<div>Stuck Stretch (STIT)</div> <div>0 (M) 20</div>	<div>Peak Coherence / RA - P & S Comp (CHRP)</div> <div>010</div> <div>(-----)</div>	<div>Delta-T Comp / RA - P & S (DTRP)</div> <div>40240</div> <div>(US/F)</div>
<div>SAM4 Waveform Gain (WFG4)</div> <div>01000</div> <div>(-----)</div>	<div>Cable Drag From STIA to STIT</div>	<div>Peak Coherence / TA - P & S Comp (CHTP)</div> <div>010</div> <div>(-----)</div>	<div>Delta-T Shear / RA - P & S (DTRS)</div> <div>40240</div> <div>(US/F)</div>
<div>Gamma Ray (GR_EDTC) (GAPI)</div> <div>0200</div>	<div>Tool/Tot. Drag From D3T to STIA</div>	<div>Peak Coherence / RA - P & S Shear (CHRS)</div> <div>-19</div> <div>(-----)</div>	<div>MinAmplitudeMax</div> <div>Rec.Array P&S Slow Proj. CVDL (SPR4)</div> <div>40240</div> <div>(US/F)</div>
<div>Tension (TENS) (LBF)</div> <div>100000</div>		<div>Peak Coherence / TA - P & S Shear (CHTS)</div> <div>-19</div> <div>(-----)</div>	
<div>Waveform Data Copy Indicator 4 - Monopole P&S (WCI4)</div> <div>010</div> <div>(-----)</div>		<div>Delta-T Comp / RA - P & S (DTRP)</div> <div>44040</div> <div>(US/F)</div>	

<u>Delta-T Comp / TA - P & S (DTTP)</u>		
440	(US/F)	40
<u>Delta-T Comp - P & S (DT4P)</u>		
440	(US/F)	40
<u>Delta-T Shear / RA - P & S (DTRS)</u>		
440	(US/F)	40
<u>Delta-T Shear / TA - P & S (DTTS)</u>		
440	(US/F)	40
<u>Delta-T Shear - P & S (DT4S)</u>		
440	(US/F)	40

PIP SUMMARY

Time Mark Every 60 S

Parameters

DLIS Name	Description	Value	
DSST-B: Dipole Shear Imager – B			
BHS	Borehole Status	OPEN	
CASF	Label Casing Function – Monopole P&S	50	
COLL	Label Slowness Lower Limit – Monopole P&S Compressional	40	US/F
COUL	Label Slowness Upper Limit – Monopole P&S Compressional	180	US/F
DDE4	Digitizing Delay 4	0	US
DDEX	Digitizing Delay X	0	US
DSI4	Digitizer Sample Interval 4	10	US
DSIX	Digitizer Sample Interval X	40	US
DTF	Delta–T Fluid	204.5	US/F
DWC4	Digitizer Word Count 4	512	
DWCX	Digitizer Word Count X	512	
FILG	Label Fill Gap Control – Monopole P&S	COMP_SHEAR	
LFC	Label Formation Character – Monopole P&S	DYNAMIC	
MCS	Mean Casing Slowness	57	US/F
MTXG	Monopole Transmitter Geometry	186	IN
NWI4	Number Waveform Items 4	8	
NWIX	Number Waveform Items X	0	
RSMN	Label Shear/Compressional Minimum Ratio – Monopole P&S	1.4	
RSMX	Label Shear/Compressional Maximum Ratio – Monopole P&S	2.12	
RX1G	Receiver 1 Geometry	294	IN
RX2G	Receiver 2 Geometry	300	IN
RX3G	Receiver 3 Geometry	306	IN
RX4G	Receiver 4 Geometry	312	IN
RX5G	Receiver 5 Geometry	318	IN
RX6G	Receiver 6 Geometry	324	IN
RX7G	Receiver 7 Geometry	330	IN
RX8G	Receiver 8 Geometry	336	IN
SAM4	DSST Sonic Acquisition Mode 4 – High Frequency Monopole Mode for P&S	EVEN	
SAMX	DSST Sonic Acquisition Mode X – Both Dipoles or Monopole Mode for Expert	OFF	
SAS4	STC Sonic Array Status – Monopole P&S	255	
SBO4	STC Search Band Offset – Monopole P&S	500	US
SBR4	STC Baseline Removal – Monopole P&S	ON	
SBW4	STC Search Bandwidth – Monopole P&S	2000	US
SFC4	STC Formation Character – Monopole P&S	SELECTABLE	
SFM4	STC Filter – Monopole P&S	B3–20K	
SHLL	Label Slowness Lower Limit – Monopole P&S Shear	75	US/F
SHUL	Label Slowness Upper Limit – Monopole P&S Shear	180	US/F
SLL4	STC Slowness Lower Limit – Monopole P&S	40	US/F
SST4	STC Slowness Step – Monopole P&S	2	US/F
SSW4	STC Source Waveform – Monopole P&S	WF_SAM4	
STLL	Label Slowness Lower Limit – Monopole Stoneley	180	US/F
STUL	Label Slowness Upper Limit – Monopole Stoneley	780	US/F
SUL4	STC Slowness Upper Limit – Monopole P&S	240	US/F
SWD4	STC Slowness Width – Monopole P&S	10	US/F
TBF4	STC Time for Baseline Fill – Monopole P&S	300	US
TLL4	STC Time Lower Limit – Monopole P&S	150	US
TST4	STC Time Step – Monopole P&S	50	US
TUL4	STC Time Upper Limit – Monopole P&S	3660	US
TWD4	STC Time Width – Monopole P&S	1000	US
TWI4	STC Integration Time Window – Monopole P&S	500	US
TWSX	Transmitter Waveform Select X	0	
WFM4	Waveform Mode 4	W1	
EDTC-B: Enhanced DTS Cartridge			
BHS	Borehole Status	OPEN	

DIR: Directional Survey Computation					
SPVD		TVD of Starting Point	0	FT	
TIMD		Along-hole depth of Tie-in Point	0	FT	
TIVD		TVD of Tie-in Point	0	FT	
	HOLEV: Integrated Hole/Cement Volume				
BHS		Borehole Status	OPEN		
	STI: Stuck Tool Indicator				
LBFR		Trigger for MAXIS First Reading Label	STI		
STKT		STI Stuck Threshold	2.5	FT	
TDD		Total Depth – Driller	3482.00	M	
TDL		Total Depth – Logger	3482.50	M	
	System and Miscellaneous				
BS		Bit Size	8.500	IN	
DO		Depth Offset for Playback	0.0	M	
PP		Playback Processing	NORMAL		
Format: DSST_P_S_VDL_COLOR		Vertical Scale: 1:200		Graphics File Created: 09-Feb-2010 12:40	
OP System Version: 17C0-154					
FBST-B	17C0-154	DSST-B	17C0-154		
EDTC-B	17C0-154	DTPC-A	17C0-154		
Input DLIS Files					
DEFAULT	FMI_DSI_027PUP	FN:40	PRODUCER	08-Feb-2010 22:35	3374.3 M 3269.9 M
Output DLIS Files					
DEFAULT	FMI_DSI_035PUP	FN:58	PRODUCER	09-Feb-2010 12:40	